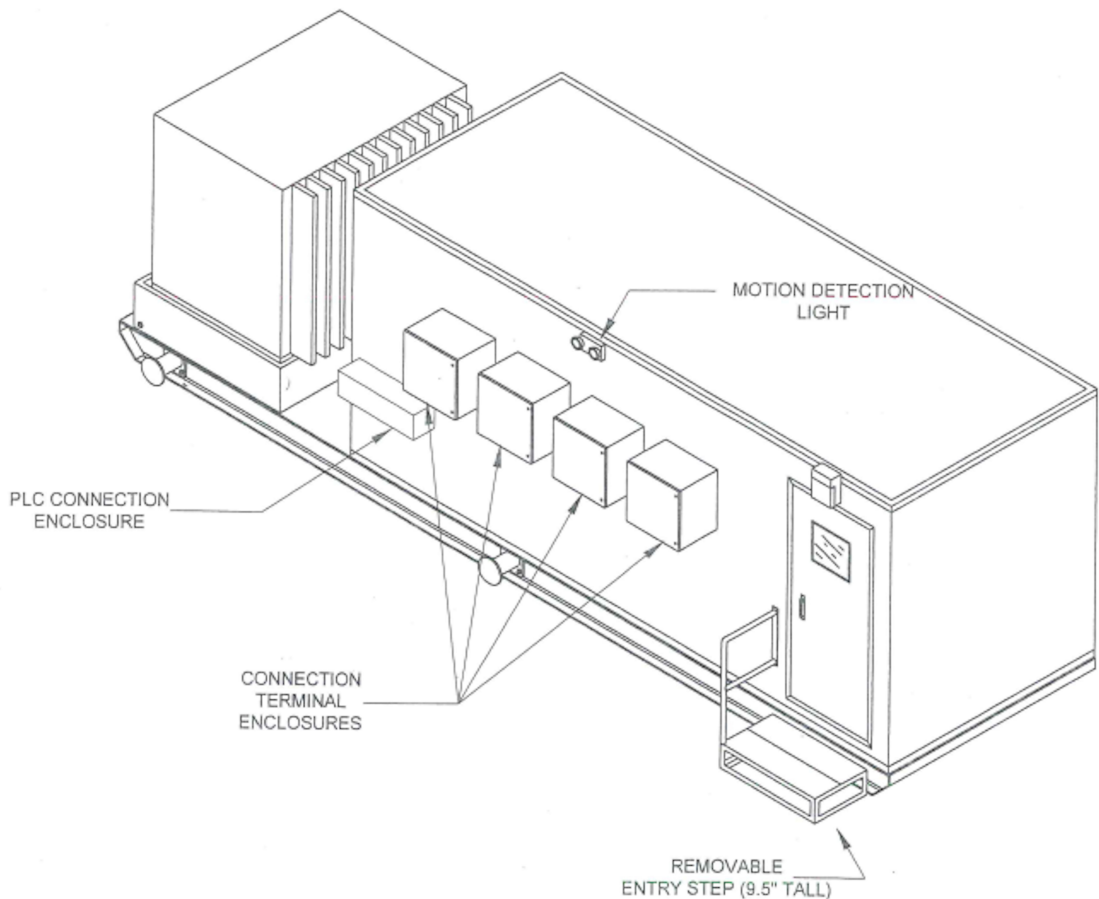


APPROXIMATE WEIGHTS AND DIMENSIONS

ITEM	DIMENSION W x D x H	WEIGHT
SKID	30' x 8' x 1'	9500 lbs
CONNEX	21' x 8' x 9'-7"	8000 lbs
XFMR	70" x 64.2" x 72.4"	9700 lbs
MCC	120" x 24" x 90"	3600 lbs
VFD (EACH)	31.7" x 24.4" x 83.7"	990 lbs (4)
HVAC	42.1" x 22.4" x 84.8"	700 lbs
TOTAL		35460 lbs



E-HOUSE BACK (CONCEPTUAL)

AEA
ARIZONA
ELECTRICAL
APPARATUS
TUCSON, AZ

PROJECT: WATER SYSTEM
BOOSTER PUMP E-HOUSE
DWG TITLE: E-HOUSE BACK CONCEPTUAL
DWG NO. AEA-110112-16

DATE: 12/6/12 ORIGIN: JB SHEET NO. 16 OF 17 REV P2

CLIENT REVIEW
DATE
AS BUILT: 09/06/08